

STALWART

Trinocular Zoom Stereo Microscope STM-3036AT Series



Introduction

STM-3036AT Series has excellent and advanced optical performance, provide a plan and clear micro image, superior image is available even at the edge of viewing field. New designed eyepiece with adjustable diopter, zoom objectives and varieties of auxiliary objectives, expand the magnification range to acquire clearer and brighter micro image. Brand new ergonomic design, long time use without fatigue, ensure easy and comfortable operation. STM-3036AT Series is widely applied to biological, medical scientific research, electronic industry online testing and other field, meeting the demand of high accuracy measurement.

Features

Eyepieces

High eyepoint, wide field eyepiece 10X/22mm (Standard). There are 15X/16mm, 20X/12mm and 30X/8mm for option to meet different requirements.

Viewing head

45° or 60° viewing head, according with ergonomics, is the best inclination for observation. To observe in comfortable position, long time and high efficiency working is available. Connect trinocular tube to camera system, image output, analysis and storage are available.

Focus system

Precision guide rail ensures flexible and accurate adjustment. Tension adjustable focusing knobs help flexible and comfortable operation. Both sides of zoom knobs are adjustable.

Multiple illumination and observation

New integrated design, combine high bright LED with base & stand. Independent intensity adjustable switch for top and bottom illuminators, creates uniform, long-lasting and stable images under different magnification. Optional illuminators help you to meet different observation needs.

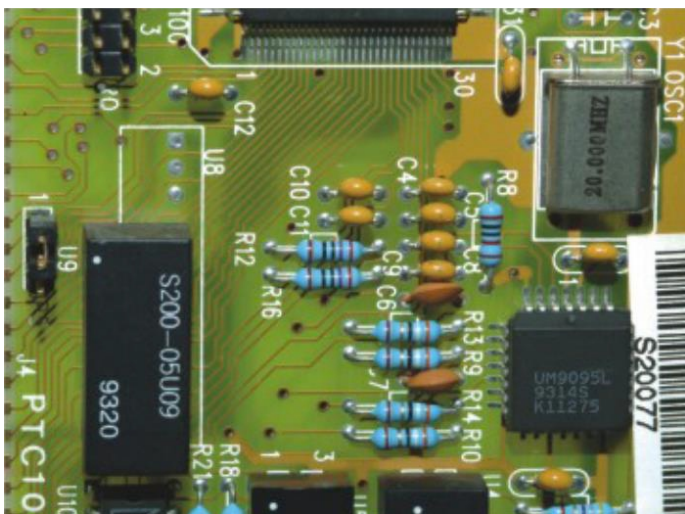
Different auxiliary objectives

Working distance and magnification can be accordingly adjusted by using different auxiliary objectives. There are 6 options: 0.3X, 0.4X 0.5X, 0.7X, 1.5X and 2X, to provide the best magnification system and suitable working distance for different needs.

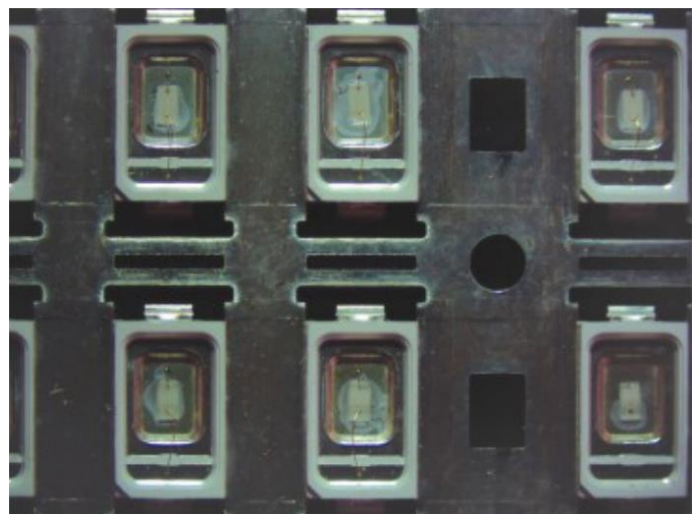
Application

Electronic industry inspection

STM-3036AT Series is widely used for industry inspection and analysis, such as for welding transistors spot, testing superficial phenomenon for different material crevices and stomatal corrosion. STM-3036 can be assembled in machine equipment, used for manufacturing small precision components, monitor the producing process, test the components and assembly tools.



PCB



LED bracket

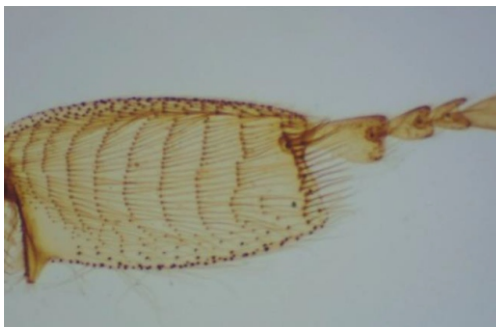
Application

Biomedical research

STM-3036AT can be used for basic biology research of medical & science, and also suitable for teaching experiment course in schools and colleges. It is a useful assistance for studying zoology, botany, entomology, histology, anatomy, dermatology, etc.



Hydra



Bee Leg

Specification

| Item | Specification | STM-3036AT1 | STM-3036AT2 | STM-3036AT3 |
|--------------|----------------------------------------------------------------------------------------------------------------------------------------------------------------------------------------|-------------|-------------|-------------|
| Viewing Head | 45° inclined binocular head, continuous zoom objective 0.67X-4.5X, working distance 100mm, interpupillary distance: 54-76mm, with builtin interlocking mechanism, fixed eyepiece tube | Optional | Optional | Optional |
| | 45° inclined trinocular head, continuous zoom objective 0.67X-4.5X, working distance 100mm, interpupillary distance: 54-76mm, with builtin interlocking mechanism, fixed eyepiece tube | Standard | Standard | Standard |
| | 60° inclined binocular head, continuous zoom objective 0.67X-4.5X, working distance 100mm, interpupillary distance: 54-76mm, with builtin interlocking mechanism, fixed eyepiece tube | Optional | Optional | Optional |
| | 45° inclined binocular head, continuous zoom objective 0.8X-5X, working distance 100mm, interpupillary distance: 54-76mm, with builtin interlocking mechanism, fixed eyepiece tube | Optional | Optional | Optional |
| | 45° inclined binocular head, continuous zoom objective 1X-6.7X, working distance 100mm, interpupillary distance: 54-76mm, with builtin interlocking mechanism, fixed eyepiece tube | Optional | Optional | Optional |

| Item | Specification | STM-3036AT1 | STM-3036AT2 | STM-3036AT3 | |
|------------------|----------------------------------------------------------------------------------------------------------------------------------------------------------------------|----------------|-------------|-------------|----------|
| Eyepiece | High eyepoint wide field eyepiece WF10TX/22mm, with adjustable diopter | Standard | Standard | Standard | |
| | High eyepoint wide field eyepiece WF10TX/22mm, with micrometer and adjustable diopter | Optional | Optional | Optional | |
| | High eyepoint wide field eyepiece WF15TX/16mm, with adjustable diopter | Optional | Optional | Optional | |
| | High eyepoint wide field eyepiece WF15TX/16mm, with micrometer and adjustable diopter | Optional | Optional | Optional | |
| | High eyepoint wide field eyepiece WF20TX/12mm, with adjustable diopter | Optional | Optional | Optional | |
| | High eyepoint wide field eyepiece WF20TX/12mm, with micrometer and adjustable diopter | Optional | Optional | Optional | |
| | High eyepoint wide field eyepiece WF30TX/8mm, with adjustable diopter | Optional | Optional | Optional | |
| Objective | Zoom objective | 0.67X-4.5X | Standard | Standard | Standard |
| | | 0.8X-5X | Optional | Optional | Optional |
| | | 1X-6.7X | Optional | Optional | Optional |
| | Auxiliary objective | 0.3X, WD=287mm | Optional | Optional | Optional |
| | | 0.4X, WD=217mm | Optional | Optional | Optional |
| | | 0.5X, WD=177mm | Optional | Optional | Optional |
| | | 0.7X, WD=120mm | Optional | Optional | Optional |
| | | 1.5X, WD=47mm | Optional | Optional | Optional |
| | | 2X, WD=26mm | Optional | Optional | Optional |
| Working Distance | 100mm | Standard | Standard | Standard | |
| Focus Holder | Focus holder BSZ-A2, tension adjustable, moving range 48.5mm, pillar hole size: Φ 32mm, microscope mount size: Φ 76mm, distance between the 2 holes: 150mm | Standard | | Standard | |

| Item | Specification | STM-3036AT1 | STM-3036AT2 | STM-3036AT3 |
|-------------------|----------------------------------------------------------------------------------------------------------------------------------------------------------------------------------------------------------------------------------------------------|-------------|-------------|-------------|
| Stand | BSZ-B4 Pillar stand, Pole height 228mm, pole diameter Φ 32mm, with Clips, Φ 100 black & white plate, Base size: 273*206mm, no illumination. Using with BSZ-A2 | Standard | | |
| | BSZ-B6 integrated stand and base, Φ 100 black & white plate, focusing range 106mm, base size: 303*290mm, with focus holder | | Standard | |
| | BSZ-BL3 Pillar stand, Pole height 260mm, pole diameter Φ 32mm, with Clips, Φ 100 glass plate, Base size: 303*290mm, incident (15pc LED lamp) and transmitted (70pcs LED lamps) LED illumination with separate control. Using with BSZ-A2 | | | Standard |
| Illumination | LED upper light source, only for BSZ BL1 and BSZ-BL3 | | | Standard |
| Gem Clap | Gem clap | Optional | Optional | Optional |
| C-Mount | 0.35X C-mount adapter, adjustable focus | Optional | Optional | Optional |
| | 0.5X C-mount adapter, adjustable focus | Optional | Optional | Optional |
| | 0.65X C-mount adapter, adjustable focus | Optional | Optional | Optional |
| | 1X C-mount adapter, adjustable focus | Optional | Optional | Optional |
| | Electronic eyepiece connector | Optional | Optional | Optional |
| Measurement Stage | Precision measurement stage (\emptyset 25mm/150*150mm), with mechanical micrometer. Installation size 95mm | Optional | Optional | Optional |
| | Precision measurement stage (\emptyset 25mm/150*150mm), with digital micrometer. Installation size 95mm | Optional | Optional | Optional |
| Other | Dust proof mirror, Φ 54mm, installation thread 48mm | Optional | Optional | Optional |
| | Ring lamp connector, Φ 54mm, installation thread 48mm | Optional | Optional | Optional |